



j 24 TUNING GUIDE

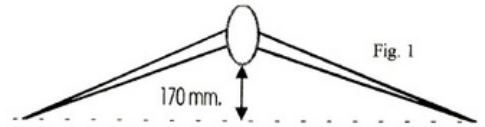
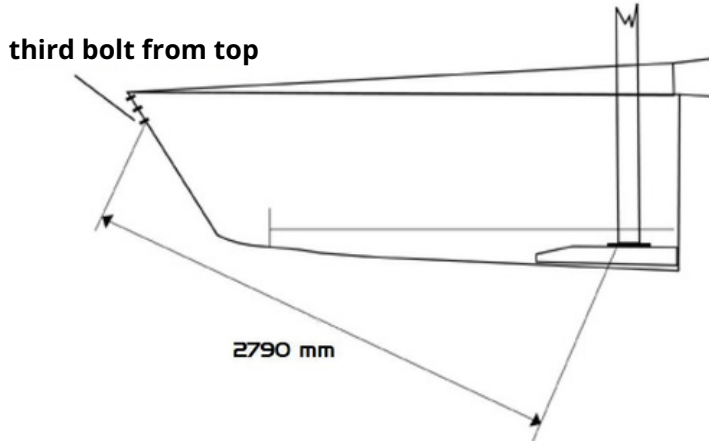
RAKE:

Forestay pin to pin: 8600 mm

Place mast in coaming down to J max 2910 mm

Place foot to 2790 mm, see diagram:

SPREADER OPENING



REGULATION TABLE:

Sail	TWS	V	D
Genoa	0-4	16	9
	4-8	21	14
	8-12	24	23
	12-17	27	27
Jib	17-21	29	31
	22+	30	32

OTHER SETTINGS:

We recommend in strong wave conditions to keep the gear a little looser, so as to give more power to the boat.

We also recommend that you build yourself a table of the relationship between tensions and turns of the turnbuckles, so that you know exactly what tensions you are sailing with and be prepared to adjust shrouds and diagonals between races, depending on the wind conditions of each race.

All tension readings were taken with Loose gauge mod "B". In case of different tensiometer, get a table of conversion from tensiometer values to kilograms (if different loose gauge models have conversion table in the package) and adjust the mast according to the calculated kilograms.